

Resource

Efficiency

Manager

Workshop



REM
RESOURCE EFFICIENCY MANAGERS



19- 20 June

19 June (morning) – REMs and Customers Only

**19 June (afternoon) and 20 June
- Open to Public**

Toftoy Building on RSA

No cost

Day 1 - Afternoon

12:30	Safety	Will Eggleston
1:00	Energy Division – ESPC, UESC, PPA, OEI, CUP, ERCIP, and EEAP	Energy Division PgMs
2:15	Engineering Support – Electrical and Mechanical	Jason Page/Rod Bridgeman
2:30	Break	
2:45	Electronic Technology Division – UMCS and Metering Facilities Division – Energy Execution Program Resilient Power Mechanical Systems Program	David Willett/Raul Alonso Rodney Graham
3:45	Closing Remarks	
4:00	Workshop Day 1 Ends	
5:00	Networking (Location TBD)	

Day 2 - Morning

7:30	Check-In, Late Registration and Networking	
8:00	Opening Remarks/Welcoming	John Trudell
8:05	Task Based Value of a REM	Dudley Powell, Sain Engineering
8:30	Camp Pike Water Project	Bradley Brown, Sain Engineering
9:00	Guam Projects	Allison Rutter, Redhorse Corp.
9:30	Break/Technology Exhibit/Networking	
10:30	Omaha USACE Projects	David Hampton, Redhorse Corp.
11:00	Ft Jackson Projects	Richard Buzard, Erica Lane
11:30	Lunch Break	

Technology Exhibit

15+ Vendors

0800 – 1430

Held in an adjoining room.

Day 2 - Afternoon

12:15	Technology Expo – Micro-grids (CE Credit)	Will Edwards, SEL,
1:15	Technology Expo – Smart Buildings	Larry Melton, The Building People
1:45	Break/Technology Exhibit/Networking	
2:30	Technology Expo – HVAC (CE Credit)	Chris Folsom, Carrier, Inc.,
3:30	Closing Remarks Huntsville Center Leadership	Arthur Martin, Chief ISPM
4:00	Workshop Day 2 Ends	
5:00	Networking (Location TBD)	

Technology Exhibit

15+ Vendors

0800 – 1430

Held in an adjoining room.

Technology Exhibit:

- 1) Innovative Technologies
- 2) Technology Updates
- 3) Energy saving project ideas (combine ECMs/lower cost to implement)

Restrictions:

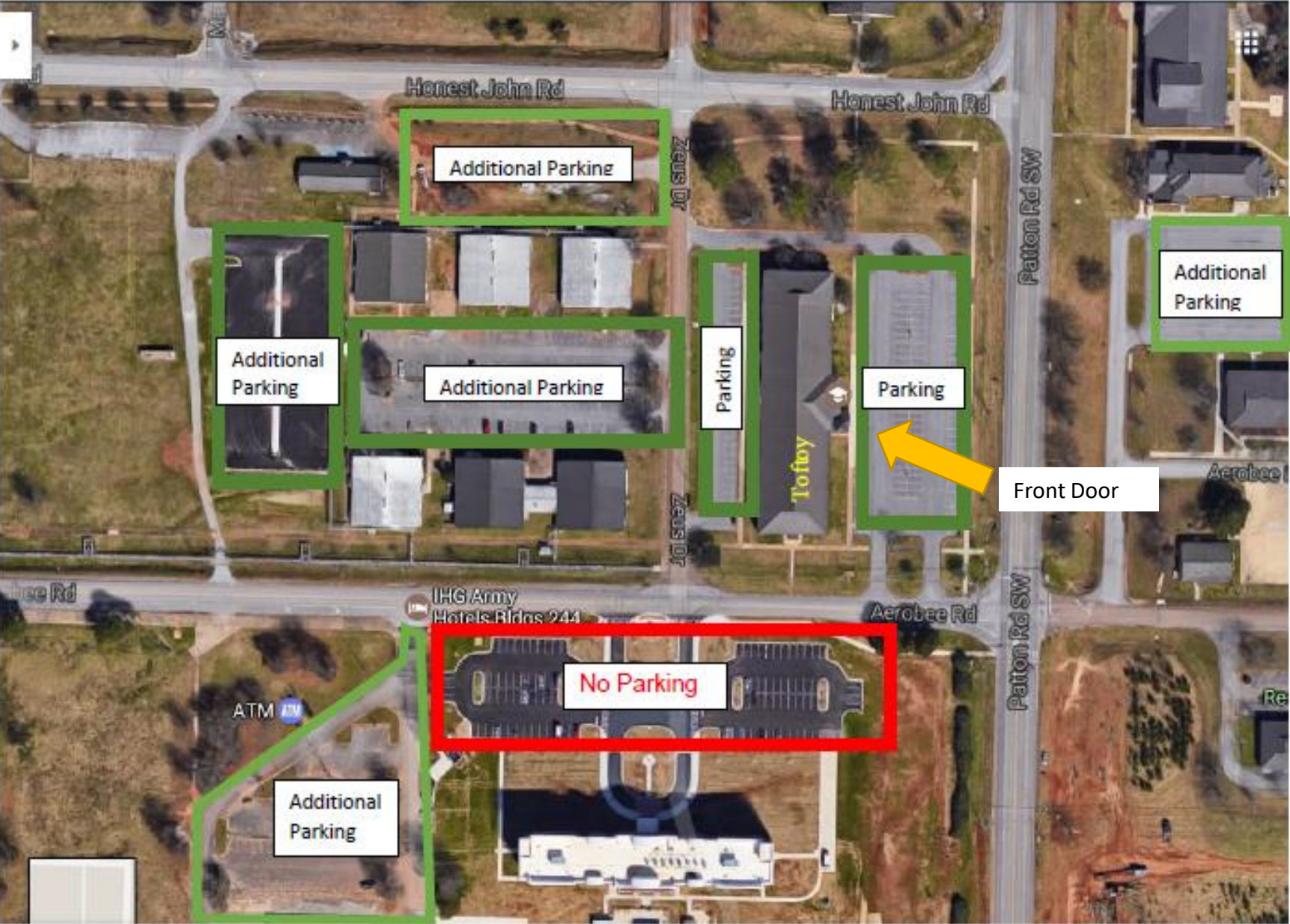
- 1) Space for 15 vendors (first 15 to sign up)
- 2) Two people per vendor (room space limit 36 people)
- 3) Table top displays only! (no large free standing displays)
- 4) Classes are in session. Please be aware of noise levels.
- 5) No food in the rooms. Only drinks cups/bottles with covers.

Exhibit Room:

- 1) Room 225
- 2) Set up 0730
Take down at 1500
Out of building by 1600
- 3) Use Front Door/Elevator to the left.
- 4) **Overflow presentation room**
(Main room is at capacity with REMs)



Toftoy Hall (Bldg. 3495) Parking





REM

RESOURCE EFFICIENCY MANAGERS



®